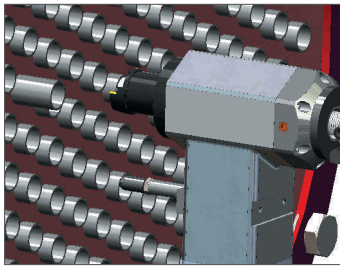
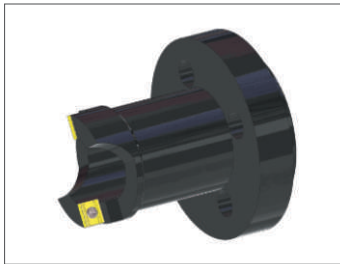


TUBE END FACING MACHINES - 1625 AUTO LOCK LEVER FEED



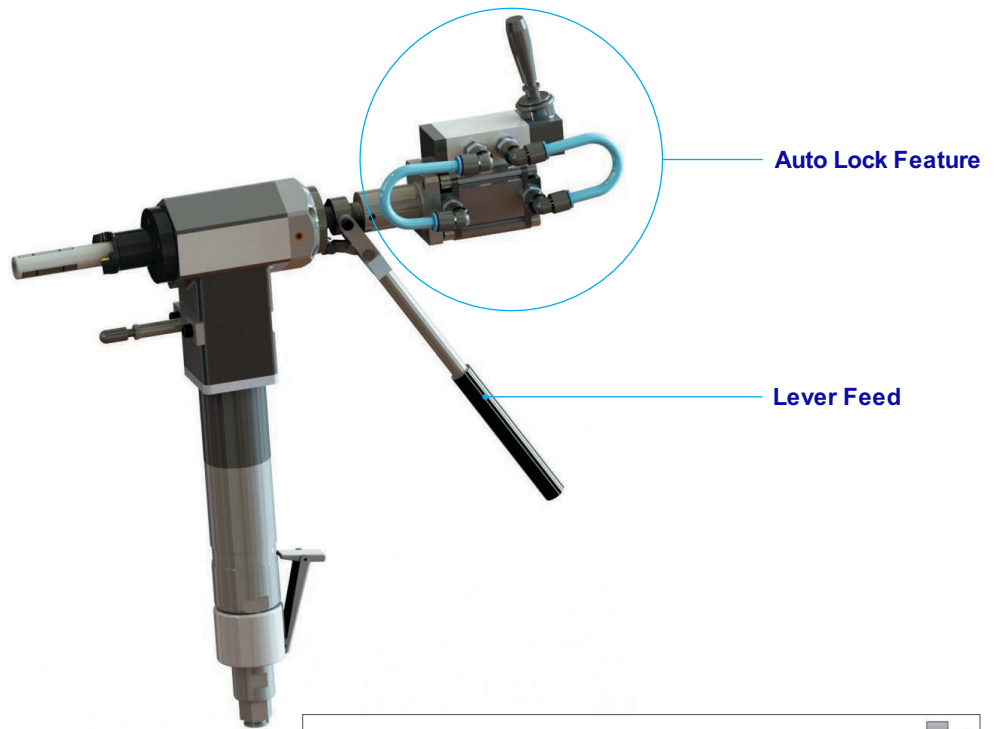
Depth Stop Adjustment Attachment

It enables precise setup of the tube projection.

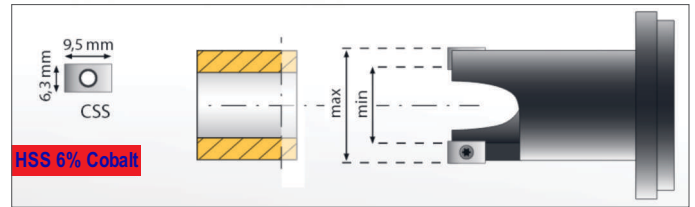


Special Cutter Head

Can be replaced by a special cutter head with insert bit as per special working environment.



Tube Facing Cutter Head



Head Type	Tube Capacity		Cutter Range (min-max)		Degree
	inch	GA	mm	inch	
TFCH - 750	3/4"	12 to 23	13.5 - 25.5	0.53 - 1.00	90
TFCH - 875	7/8"	10 to 23	15.4 - 27.0	0.61 - 1.06	90
TFCH - 1000	1"	10 to 23	18.5 - 30.5	0.73 - 1.20	90
TFCH - 1250	1-1/4"	10 to 23	25.0 - 37.0	0.98 - 1.45	90
TFCH - 1500	1-1/2"	10 to 23	31.0 - 43.0	1.22 - 1.69	90

The FMP-1625 auto lock lever feed is a light weight and compact machine for facing, beveling and weld preparation on all materials including stainless steel, duplex, inconel and others. The auto locking feature dramatically reduces production time. It produces fast, accurate weld preps on any schedule and material of pipe effortlessly within its range. Easy to handle and quick to setup. Used in shutdown environments condensers and heat exchangers, boiler.

The FMP-1625 auto lock lever feed comes in 3 different - speed versions (100, 200 and 300 RPM) The lower speed machines develop more torque and are used on larger, thicker and harder tubes.

Specification

Drive		Pneumatic
Locking Range	mm (inch)	12.5 - 42 (1/2" - 1.5/8")
Application Range	mm (inch)	12.5 - 76 (1/2" - 3")
Free Speed	RPM	120
Torque	Nm (lbf.ft)	38 (28)
Pneumatic Power	HP	0.83
Air Consumption	cfm	15 - 18
Air Pressure	Bar (psi)	6 (90)
Body Size (W x H x L)	mm	50 x 400 x 300
Net Weight	kg (lb)	4.8 (10.6)